

High power test facilities - Renewal of making switches and gas insulated buses of short-circuit generator

Purpose:

To maintain the testing ability of high power test facilities, it is aimed to successively renew making switches, gas insulated buses and outdoor disconnectors. In FY 2010, the making switches and gas insulated buses were renewed..

Outline:

Making switches and gas insulated buses of short-circuit generator to flow the short-circuit current were renewed.

Specifications:

(1) Making switch

- Rated voltage: 15.75 kV
- Rated frequency: 50 Hz/60Hz
- Rated making current: 425 kA peak
- Rated short-time withstand current: 150 kA r.m.s., 2 sec
- Rated closing time: 20 msec \pm 0.2 msec

(2) Gas insulated bus

- Rated voltage: 24 kV
- Rated frequency: 50 Hz/60Hz
- Rated lightning impulse withstand voltage: 125 kV
- Rated power frequency withstand voltage: 50 kV
- Rated short-time withstand current: 150 kA r.m.s., 2 sec
- Rated peak withstand current: 400 kA peak
- Conductor: Installed in an earthed metal enclosure.
- Insulation gas: Air
- Cooling system: Natural cooling

Location and Date of Installation:

Yokosuka area, September 2010



Photo 1 Making switches (three phases)

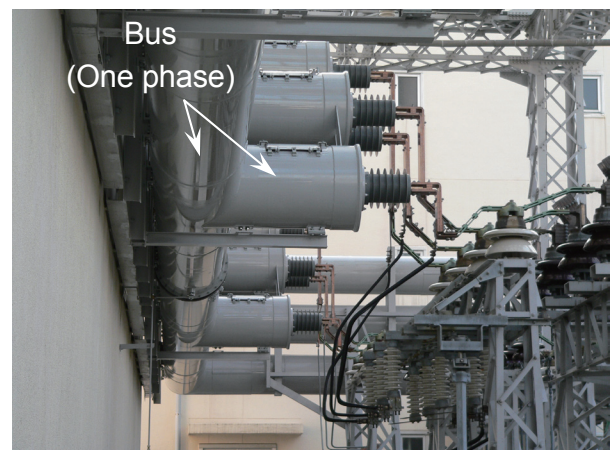


Photo 2 Gas insulated buses of short-circuit generator