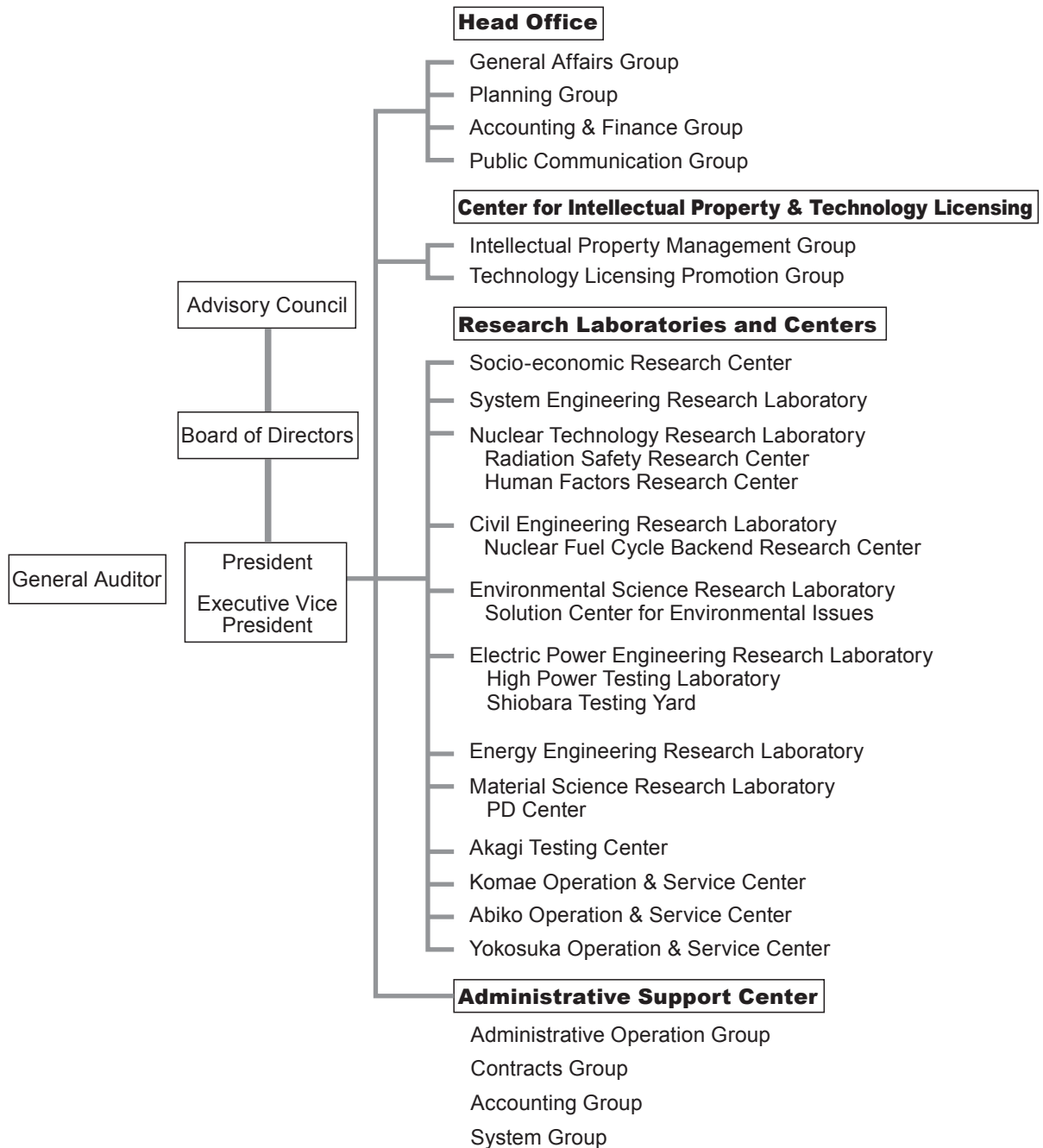


# Organization of the Central Research Institute of Electric Power Industry



**Central Research Institute of Electric Power Industry**

# **Annual Research Report**

**Fiscal Year 2010**

# Contents

<b>Contents</b>	ii
<b>1. Outline of Research Activities</b>	1
Outline of Research Activities	2
CRIEPI's R&D Portfolio in FY2010	3
<b>2. Principal Research Results</b>	5
<b>Project Subjects</b>	
<b>Nuclear Technology</b>	
1 Irradiation Embrittlement and Structural Integrity of Reactor Pressure Vessel	6
2 Stress Corrosion Cracking in Light Water Reactors	8
3 Pipe Wall Thinning Evaluation & Seismic Evaluation of Thinned Pipeline	10
4 Deterioration Diagnosis of Instrumentation and Electrical Equipment	12
5 Transport and Storage for Spent Nuclear Fuel	14
6 High-Level Radioactive Waste Management	16
7 Low Level Radio Active Waste Disposal	18
8 Seismic Margin Evaluation of Civil-engineered Structures at Nuclear Power Plants	20
9 Development of Metal Fuel Cycle Technology for Practical Application	22
10 Elucidation of the Mechanisms of Low Dose Radiation Effects	24
11 Rational Radiation Safety Technology	26
<b>Stable Power Supply Technology</b>	
12 Diagnosis and Operation of Aged Transmission and Distribution Facilities	28
13 Evaluation of Damage to Overhead Transmission Facilities Caused by Wind, Snow and Salt	30
14 Development of a Simple PCB Removal Method for Contaminated Transformers and a Rapid PCB Measurement Method	32
15 Strategic Disaster Restoration Support Technology for Electric Power Distribution and Substation Equipment	34
16 Lightning Protection for an ICT Oriented Society	36
17 Disaster Prevention and Maintenance for Hydropower Facilities	38
18 Integrated Maintenance Technology of Inspection, Prediction and Monitoring	40
19 Expansion of fuel types and improvement of efficiency in IGCC	42
20 Utilization of Low Grade Fuels	44
21 Advanced Utilization Technology of Biomass and Waste	46
22 Thermal Power Generation Systems with CO <sub>2</sub> Capture	48
23 CO <sub>2</sub> Storage Technology	50
<b>Environment and Energy Utilization Technology</b>	
24 Long-term Global Warming Projection and Support for Adaptation	52
25 Severe Storm Prediction and Impact Assessment of Electric Facilities Under Global Warming	54

26	Design Support for Electric Kitchens	56
27	Highly-Efficiency Heat Pump	58
28	Low-loss Power Semiconductors	60
29	Low-loss Compact Inverter Applied Equipment	62
30	Secondary Battery Utilization Technology	64
31	R&D for Safe and Reliable Solvent-free Lithium-Ion Polymer Batteries	66
32	Integrated Operation and Control Techniques of Supply and Demand Sides in Autonomous Demand Area Power System	68
33	Next-Generation Communication Network System	70
34	Evaluation of Demand Response Programs	72
35	Trunk Power System Planning and Operation Under Large Penetration of Intermittent Generations	74
36	Next Generation Electric Power Equipment for Distribution and Transmission Systems	76
37	Energy Technology Strategy	78

### **Base Technology Subjects**

	Socio-economic Research Center	80
	System Engineering Research Laboratory	82
	Nuclear Technology Research Laboratory	84
	Civil Engineering Research Laboratory	86
	Environmental Science Research Laboratory	88
	Electric Power Engineering Research Laboratory	90
	Energy Engineering Research Laboratory	92
	Materials Science Research Laboratory	94

### **3. Principal New Research Facilities** 97

### **4. Activities** 101

#### **Activities** 102

## On the Publication of the Annual Research Report FY 2010

The Central Research Institute of Electric Power Industry (CRIEPI) has been strenuously conducting wide-ranging research activities principally focusing on the three key technology fields of “nuclear technology”, “stable power supply technology” and “environment and energy utilisation technology”. The work in FY 2010 produced positive outcomes relating to, among others, evaluation of the economical energy conservation potential in the commercial sector, system to evaluate seismic damage to distribution facilities and field application of the diagnostic technology for CV cable degradation as outlined in the Annual Research Report.

On the 11<sup>th</sup> March, 2011 when the work to compile this Report was in progress, a Great East Japan Earthquake hit eastern Japan. It caused not only direct damage but also had a serious impact on society and the economy through severe accidents at nuclear power plants and large-scale outages necessitated by damage to principal power sources.

Since the onset of the Great East Japan Earthquake, the CRIEPI has been earnestly playing its part, responding to urgent and varied external requests for assistance. We are determined to continue to support the electric power industry by means of systematically as well as flexibly utilising our wide-ranging research resources, including those relating to earthquake and tsunami countermeasures, operation and maintenance of nuclear power facilities and base technologies regarding power supply and demand, with a view to making a positive contribution to society.